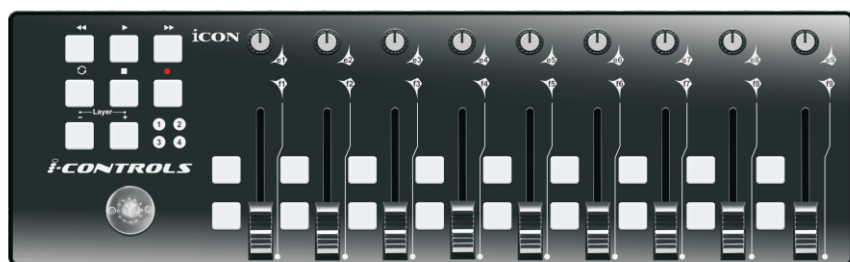


iCON

i-CONTROLS

Multi-Controls with Joystick
USB MIDI controller







Owner's Manual



EN16549



	CAUTION RISK OF ELECTRIC SHOCK DO NOT OPEN RISQUE DE CHOC ELECTRIQUE NE PAS OUVRIR		
CAUTION: TO REDUCE THE RISK OF ELECTRIC SHOCK DO NOT REMOVE COVER (OR BACK) NO USER-SERVICEABLE PARTS INSIDE REFER SERVICING TO QUALIFIED PERSONNEL			
ATTENTION: POUR EVITER LES RISQUES DE CHOC ELECTRIQUE: NE PAS ENLEVER LE COUVERCLE. AUCUN ENTRETIEN DE PIECES INTERIEURES PAR L'USAGER. CONFIER L'ENTRETIEN AU PERSONNEL QUALIFIE.			
AVIS: POUR EVITER LES RISQUES D'INCENDIE OU D'ELECTROCUTION, N'EXPOSEZ PAS CET ARTICLE A LA PLUIE OU A L'HUMIDITE			

The lightning flash with arrowhead symbol within an equilateral triangle is intended to alert the user to the presence of uninsulated dangerous voltage within the product's enclosure, that may be of sufficient magnitude to electric shock to persons. Le symbole clair avec point de flèche à l'intérieur d'un triangle équilatéral est utilisé pour alerter l'utilisateur de la présence à l'intérieur du coffret de voltage dangereux non isolé d'ampleur suffisante.

The exclamation point within an equilateral triangle is intended to alert the user of the presence of important operating and maintenance (servicing) instructions in the literature accompanying the appliance. Le point d'exclamation à l'intérieur d'un triangle équilatéral est employé pour alerter les utilisateurs de la présence d'instructions importantes pour le fonctionnement et l'entretien (service) dans le livret d'instruction accompagnant l'appareil.

Important Safety Instructions

1. Read these instructions.
2. Keep these instructions.
3. Heed all warnings.
4. Follow all instructions.
5. Do not use this apparatus near water.
6. Clean only with dry cloth.
7. Do not block any ventilation openings. Install in accordance with the manufacturer's instructions.
8. Do not install near any heat sources such as radiators, heat registers, stoves, or other apparatus (including amplifiers) that produce heat.
9. Only use attachments/accessories specified by the manufacturer.

Contents

Introduction	
What's in the package.....	1
Register your ICON ProAudio product to your personal account	2
Features	3
Front Panel Layout	4
Side Panel Layout	4
Getting Started	5
Connecting your iControls system	5
Controller Features and Settings	5
Faders	5
Control Buttons.....	5
Knobs	6
Joystick	6
MIDI Machine Control (MMC) buttons.....	6
Installing iMap™ Software for Mac OSX	7-8
Installing iMap™ Software for Windows	9-10
Assigning MIDI functions with iMap™	11-13
iMap™ iControls software panel	10
Restore the factory default settings	12
Daisy Chain with iControls or any i-series controllers	13
Specifications	14
Appendix A	15
General MIDI Controller Numbers (MIDI CC'S)	16
Services	17

Introduction

Thank you for purchasing the ICON iControls USB MIDI controller. We sincerely trust this product will provide years of satisfactory service, but if anything is not to your complete satisfaction, we will endeavor to make things right.

CONTROLS

In these pages, you'll find a detailed description of the features of the iControls, as well as a guided tour through its front and rear panels, step-by-step instructions for their setup and use, and full specifications.

Please register the product on our website at the below link [www. iconproaudio.com/registration](http://www.iconproaudio.com/registration):

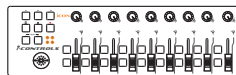
Please follow the step by step procedures. Start by inputing the device's serial number as well as your personal information, etc. By registering your product online, you will be entitled to service and after-sales support at our Help Center by visiting our website at www.iconproaudio.com. Also, all the registered products under your account will be listed on your personal product page where you will find updated information such as firmware/driver upgrades, software bundles, user manual downloads, etc. for your device.

As with most electronic devices, we strongly recommend you retain the original packaging. In the unlikely event the product must be returned for servicing, the original packaging (or reasonable equivalent) is required.

With proper care and adequate air circulation, your iControls will operate without any trouble for many years.

What's in the package?

- iControls USB MIDI controller x 1
- Quick Start Guide
- USB2.0 Cable



Register your ICON ProAudio product to your personal account

1. Check serial number of your device

Please go to [http:// iconproaudio.com/registration](http://iconproaudio.com/registration) or scan the QR code below.



Input your device's serial number and the other information on the screen. Click "Submit".

A message will pop up showing your device information such as model name and its serial number - Click "Register this device to my account" or if you see any other message, please contact our after-sales service team

2. Log in to your personal account page for existing user or sign up for new user

Existing user: Please log into your personal user page by inputting your user name and password.

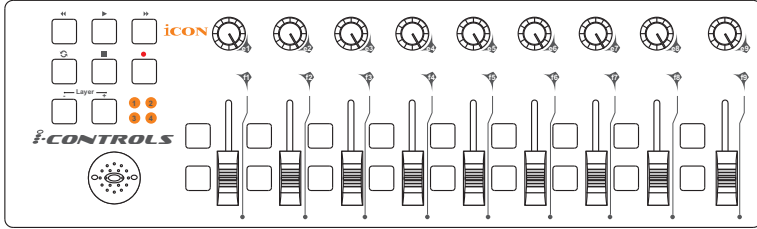
New user: Please click "Sign Up" and fill in all the information.

3. Download all useful materials

All your registered devices under your account will show on the page. Each product will be listed along with all its available files such as drivers, firmware, user manual in different languages and bundled software etc. for download.

Please make sure you have download the necessary files such as driver before you begin device installation.

Features

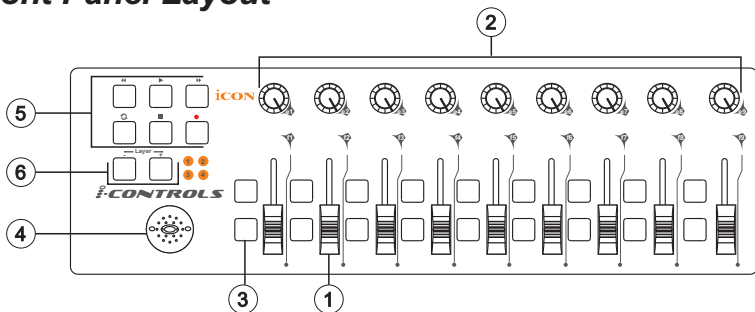


Main features include:

- Extremely compact and designed to match the MacBook™
- 9 assignable faders 18 assignable buttons
- 9 assignable rotary knobs for setting MIDI CC
- Joystick for control
- "Layer" buttons for customizing 4 scenes for instant control of multiple applications
- 6 transport buttons
- 2xUSB Connectors for daisy chain with any i-series controllers
- Class-compliant with Windows XP, Vista (32 bit), and Mac OS X
- USB bus-powered
- iMap™ software included for easy mapping of MIDI functions.
- An aluminum cover, in different graphic designs and colors, is available as an option.

CONTROLS

Front Panel Layout



① Faders

These nine programmable faders slide up and down to adjust linear MIDI parameters such as volume.

② Knobs

These nine programmable knobs allow to adjust linear MIDI parameters such as Pan.

③ Control Buttons

These eighteen programmable buttons, set in nine groups of two, allow you to activate or control the features of your DAW or the music software that you are using.

④ Joystick

This joystick works as a mouse pad on your notebook computer.

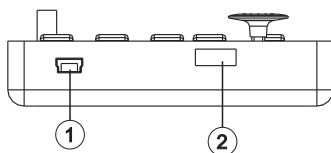
⑤ Transport Buttons (MMC)

iControls has dedicated MIDI Machine Control (MMC) buttons on the front panel.

⑥ Layer Buttons

These two buttons allow you to switch between the four layers. Each layer can be set to different parameters for the faders and other knobs.

Side Panel Layout



① USB port (B-Type)

Functions as a MIDI port to your notebook (or computer) and compatible software. Also provides power to your iControls.

② USB port

Use to daisy chain with the second unit of iControls or any i-series controllers such as iKey or iPad.

Getting Started

Connecting your iControls controller system

- 1 Connect the iControls to your Mac/PC via the USB port.

Choose a USB port on your Mac/PC and insert the wide (flat) end of the USB cable. Connect the cable's small jack end to the iControls. Your Mac/PC should automatically "see" the new hardware and notify you that it is ready to use.

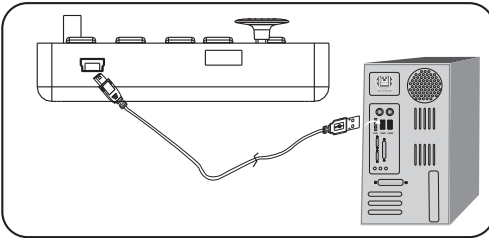


Diagram 1



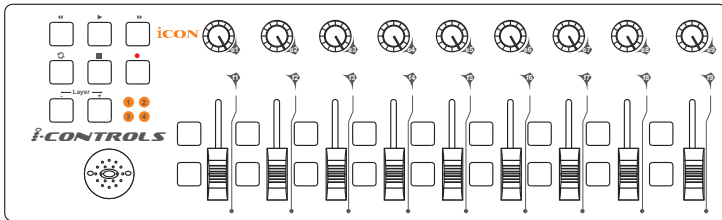
Diagram 2

- 2 Assign the MIDI messages to iControls

Refer to page 10 for "Assign the MIDI functions with "iMap™" software"

Controller Features and Settings

Learning how to effectively and creatively use the functions on your iControls is simple.



Faders

There are nine faders on iControls. Fader 9 is the generally-accepted control for volume. You can assign any one of 119 different MIDI CC numbers to any fader, although we recommend keeping Fader 9 set to volume (CC07), for volume control. CC numbers 120 to 127 are non-linear parameters, and cannot be controlled by a linear fader.

Control Buttons

There are eighteen control buttons. You can assign different CC numbers as well as MIDI channel to any button.

Knobs

There are nine knobs on iControls. Any linear CC number can be assigned to any knob, as well as any individual channels 1-16.

Michael says, "Think about how fine or smooth a control technique you will need to use, and then decide whether to use a knob or a fader for that function. Your fader chops may be smoother, or a knob, with its slow rotary action, might be more suitable."

Joystick

You may use this joystick as your computer mouse to control the computer pointer.

MIDI Machine Control (MMC) buttons

MIDI Machine Control (MMC) messages are used by some devices and software to simulate the controls that any analog tape recorder would have, such as Stop, Play, and Record. Not all software/hardware will respond to MMC messages, so look for the section on this topic in the manual for whatever software or hardware device you are using with iControls. It will tell you what functions can be operated with the MMC buttons on iControls.

The MMC message is a SysEx message. The device ID for iControls is 127, the standard MIDI default. Your software/hardware can be configured to accept this device ID, if it does not already recognize the default 127 value. The CC numbers for these controls are

- << - rewind = 05
- >> - fast forward = 04
- - stop = 01
- > - play = 02
- - record = 06

Installing iMap™ Software for MAC OSX

Please follow the procedures below step-by-step to install your iMap™ software to Mac OS X

① **Turn on your MAC.**

② **Download the Mac iMap from your Personal User Page at www.iconproaudio.com**

After you downloaded the file, please click it to start the installation process.



Diagram 1

③ **Setup Wizard appear**

Setup wizard appears, please click "Continue"

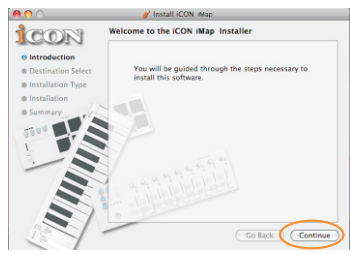


Diagram 2

④ **Choose Install Location**

Select a destination to install iMap™ software to Mac OS X, then click "Continue"

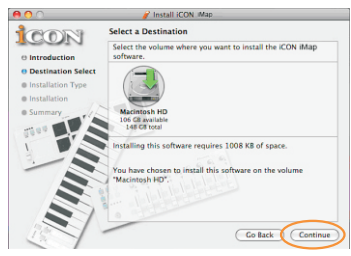


Diagram 3

⑤ **Change Install Location**

If you want to change install location, please click "Change Install Location" button and select another location or just click "Install" button to continue.

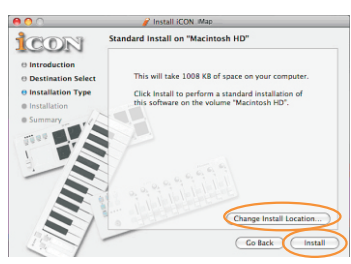


Diagram 4

Installing iMap™ Software for MAC OSX(continues)

⑥ Input Administrator information

To install iMap™ software, you need to input administrator user information, please input the name and password of administrator then click "Install" to continue.

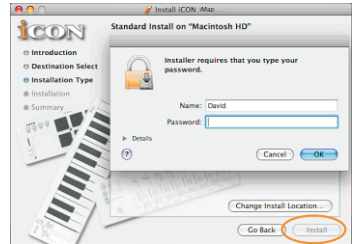


Diagram 5

⑦ Installation finished

Click "Close" to complete the iMap™ software installation.

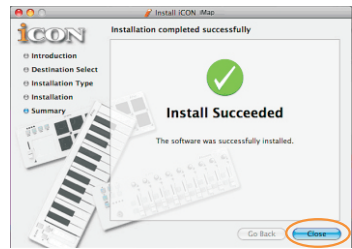


Diagram 6

Installing iMap™ Software for Windows

Please follow the procedures below step-by-step to install your iMap™ software.

- ① Turn on your PC.
- ② Download the Mac iMap from your Personal User Page at www.iconproaudio.com

After you downloaded the file, please click it to start the installation process.

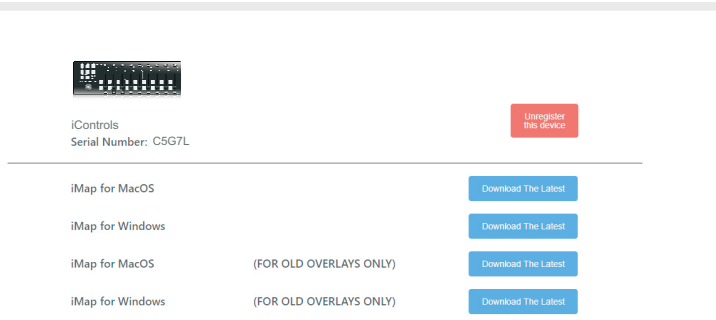


Diagram 1

- ③ Setup Wizard appear
Setup wizard appears, please click "Next"

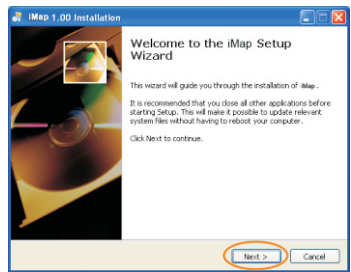


Diagram 2

- ④ Choose Install Location
Choose your preferred install location for iMap™ or use the default location and click "Next"

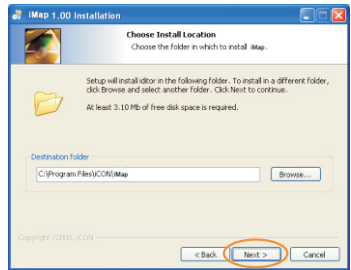


Diagram 3

Installing iMap™ Mapping Software for Windows(continues)

5 Select shortcut

Select the start menu folder in which you would like to create the iMap™ shortcut. Then click "Next"

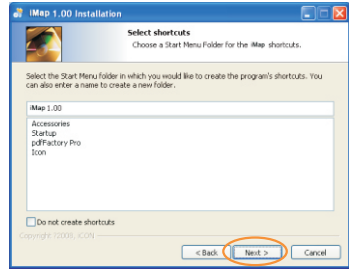


Diagram 4

6 Create a shortcut on your desktop

Please untick the box if you do not want to place a shortcut icon on your desktop for iMap™, otherwise click "Next"

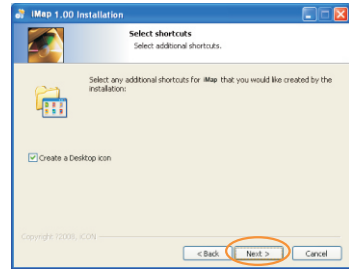


Diagram 5

7 iMap™ started to install

The iMap™ installation has now started, wait for it to finish. Then click "Finish"

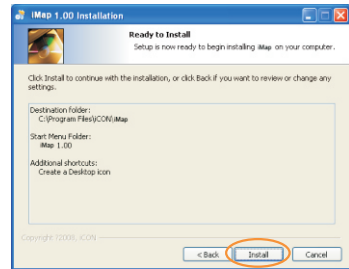


Diagram 6

8 Installation finished

Click "Finish" to complete the iMap™ software installation.

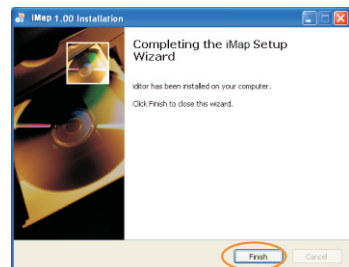


Diagram 7

Assigning MIDI functions with iMap™

You can use iMap™ to assign the MIDI functions of your iControls easily. Please launch the iMap™ software, a device selector screen will appear as shown in diagram 1. Then click the "iControls" button.



Diagram 1

Note: If your iControls is not connected to your Mac/PC, a message of "There are no MIDI input devices" will appear. Please connect iControls to your Mac/PC with the provided USB cable.

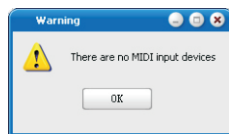
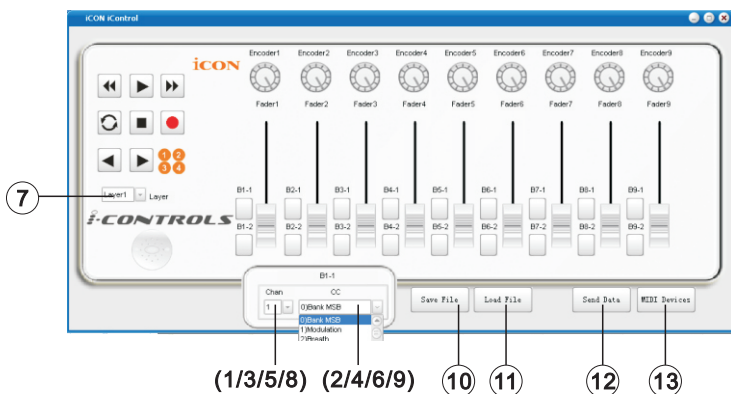


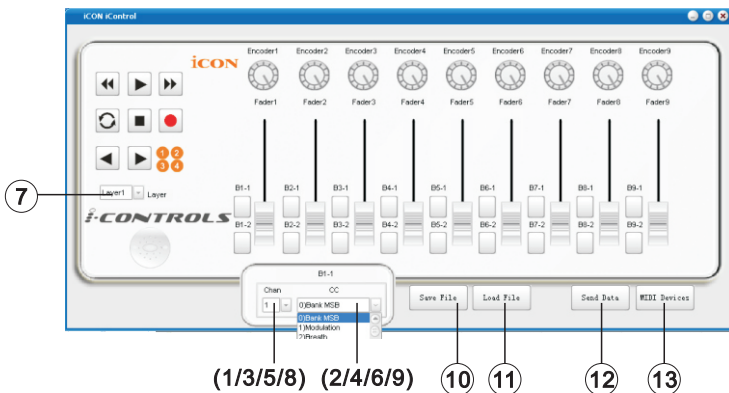
Diagram 2

iMap™ iControls software panel



- ① **Assign the MIDI channels to the fader**
Select your desired MIDI channel from 1-16 for the fader
- ② **Assign the CC number to the fader**
Select your desired CC number from 0-127 in the pull-down menu for the fader.
- ③ **Assign the MIDI channels to the control buttons**
Select your desired MIDI channel from 1-16 for the control button
- ④ **Assign the CC number to the control button**
Select your desired CC number from 0-127 in the pull-down menu for the control button.

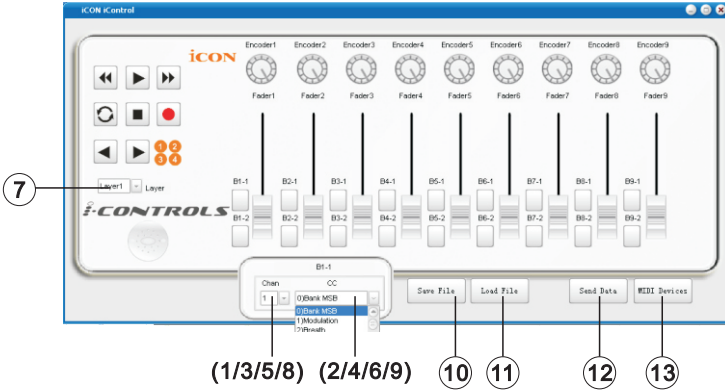
iMap™ iControls software panel(continues)



- ⑤ **Assign the MIDI channels to the knob**
Select your desired MIDI channel from 1-16 for the knob
- ⑥ **Assign the CC number to the knob**
Select your desired CC number from 0-127 in the pull-down menu for the knob.
- ⑦ **Select the 4 different Layers and choose the desired settings for each layer**
You may have 4 different "Layers" for different applications. Each "Layer" can have its own control settings.
- ⑧ **Assign the MIDI channels to the MMC buttons**
Select your desired MIDI channel from 1-16 for the MMC buttons
- ⑨ **Assign the CC number to the MMC buttons**
Depending on your DAW or music software, assign a CC number to these buttons according to your software.
(Note: We have created a series of templates for different software. These are contained on the Utility CD. Simply import the correspondence template file into your DAW and these buttons will function as MMC right away.)
- ⑩ **"Save file" button**
Click this button to save your current settings for the iControls. The file is an ".icon" file.
- ⑪ **"Load file" button**
Click this button to load a previously saved ".icon" setting file for your iControls.

iMap™ iControls software panel(continues)

CONTROLS



12 "Send Data" button

Click this button to upload the iMap™ software settings to your iKey via USB connection.

(Note: You must have connected your iControls to your Mac/PC, otherwise the settings upload will not be successful.)

13 "MIDI Devices" button

Click this button, a MIDI device select window will appear as shown in diagram 1. Please select "ICON iControls" for the MIDI Out Devices.



Diagram 1

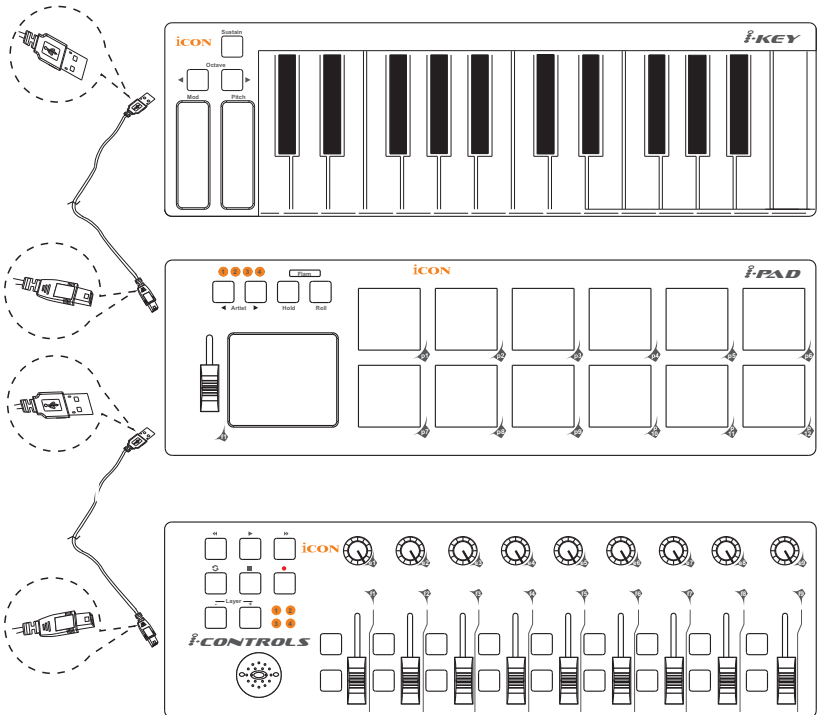
Restore the factory default settings

By holding down the buttons "Rewind ◀◀", "Play ▶" and "FastForward ▶▶" together, the settings of the iControls will return to its factory default condition.

Daisy Chain with iControls or any i-series controllers

You may daisy chain up to 3 units of iControls or any i-series controllers.

- 1 **Connect the first unit of iControls to your Mac/PC via the USB port.**
Choose a USB port on your Mac/PC and insert the wide (flat) end of the USB cable and the other small end (B-type USB pack) to iControls.
- 2 **Connect the next units of iControls (or iKey/iPad)**
Insert the wide (flat) end of the USB cable to the first unit of iControls's second USB port and the other small end (B-type USB jack) to the second unit iControls's USB port. By following the same procedure, you may daisy chain with the 3rd unit of iControls (or iKey/iPad).



Specifications

Connector:	To computer To i-series controller	USB connector (mini B type) USB connector (standard type)
Power supply:		USB bus power
Current consumption:		100mA or less
Weight:		0.51kg (1.1lb)
Dimensions:		325(L) X 99(W) X 20(H) 12.78"(L) x 3.78"(W) x 0.75"(H)

Appendix A

General MIDI Controller Numbers (MIDI CC'S)

00	Bank Select	46	Controller 46	92	Tremelo Depth
01	Modulation	47	Controller 47	93	Chorus Depth
02	Breath Control	48	Gen Purpose 1 LSB	94	Celeste (De-tune)
03	Controller 3	49	Gen Purpose 2 LSB	95	Phaser Depth
04	Foot Control	50	Gen Purpose 3 LSB	96	Data Increment
05	PortaTime	51	Gen Purpose 4 LSB	97	Data Decrement
06	Data Entry	52	Controller 52	98	Non-Reg Param LSB
07	ChannelVolume	53	Controller 53	99	Non-Reg Param MSB
08	Balance	54	Controller 54	100	Reg Param LSB
09	Controller 9	55	Controller 55	101	Reg Param MSB
10	Pan	56	Controller 56	102	Controller 102
11	Expression	57	Controller 57	103	Controller 103
12	Effects Controller 1	58	Controller 58	104	Controller 104
13	Effects Controller 2	59	Controller 59	105	Controller 105
14	Controller 14	60	Controller 60	106	Controller 106
15	Controller 15	61	Controller 61	107	Controller 107
16	Gen Purpose 1	62	Controller 62	108	Controller 108
17	Gen Purpose 2	63	Controller 63	109	Controller 109
18	Gen Purpose 3	64	Sustain Pedal	110	Controller 110
19	Gen Purpose 4	65	Portamento	111	Controller 111
20	Controller 20	66	Sostenuto	112	Controller 112
21	Controller 21	67	Soft Pedal	113	Controller 113
25	Controller 25	68	Legato Pedal	114	Controller 114
26	Controller 26	69	Hold 2	115	Controller 115
27	Controller 27	70	SoundVariation	116	Controller 116
28	Controller 28	74	Cut-off Frequency	117	Controller 117
29	Controller 29	75	Controller 75	118	Controller 118
30	Controller 30	76	Controller 76	119	Controller 119
31	Controller 31	77	Controller 77	Channel Mode Messages	
32	Bank Select LSB	78	Controller 78	120	All Sound Off
33	Modulation LSB	79	Controller 79	121	Reset all Controllers
34	Breath Control LSB	80	Gen Purpose 5	122	Local Control
35	Controller 35	81	Gen Purpose 6	123	All Notes Off
36	Foot Control LSB	82	Gen Purpose 7	124	Omni Off
37	PortaTime LSB	83	Gen Purpose 8	125	Omni On
38	Data Entry LSB	84	Portamento Control	126	Mono On (Poly Off)
39	ChannelVolume LSB	85	Controller 85	127	Poly On (Mono Off)
40	Balance LSB	86	Controller 86	Additional Messages	
41	Controller 41	87	Controller 87	128	Pitch Bend Sensitivity
42	Pan LSB	88	Controller 88	129	Fine Tune
43	Expression LSB	89	Controller 89	130	Coarse Tune
44	Controller 44	90	Controller 90	131	Channel Aftertouch
45	Controller 45	91	Reverb Depth		

Services

If your iControls needs servicing, follow these instructions.

Check our online Help Center at <http://support.iconproaudio.com/hc/en-us>, for information, knowledge, and downloads such as:

1. FAQ
2. Download
3. Learn More
4. Forum

Very often you will find solutions on these pages. If you don't find a solution, create a support ticket at our online Help Center at the link below, and our technical support team will assist you as soon as we can.

Navigate to <http://support.iconproaudio.com/hc/en-us> and then sign in to submit a ticket.

As soon as you have submitted an inquiry ticket, our support team will assist you to resolve the problem with your ICON ProAudio device as soon as possible.

To send defective products for service:

1. Ensure the problem is not related to operation error or external system devices.
2. Keep this owner's manual. We don't need it to repair the unit.
3. Pack the unit in its original packaging including end card and box. This is very important. If you have lost the packaging, please make sure you have packed the unit properly. ICON is not responsible for any damage that occurs due to non-factory packing.
4. Ship to the ICON tech support center or the local return authorization. See our service centers and distributor service points at the link below:

If you are located in US

Send the product to:

North America

Mixware, LLC – U.S. Distributor

11070 Fleetwood Street – Unit F.

Sun Valley, CA 91352; USA

Tel.: (818) 578 4030

[Contact: www.mixware.net/help](http://www.mixware.net/help)

If you are located in Hong Kong

Send the product to:

ASIA OFFICE:

Unit F, 15/F., Fu Cheung Centre,

No. 5-7 Wong Chuk Yueng

Street, Fotan,

Sha Tin, N. T., Hong Kong.

If you are located in Europe

Send the product to:

Sound Service

GmbH European

Headquarter Moriz-Seeler-Stra

3D-12489 Berlin

Telephone: +49 (0)30 707 130-0

Fax: +49 (0)30 707 130-189

[E-Mail: info@sound-service.eu](mailto:info@sound-service.eu)

5. For additional update information please visit our website at: www.iconproaudio.com



天猫官方旗舰店



天猫店iconproaudio旗舰店

抖音号



抖音iCON艾肯

哔哩哔哩



B站iCONProAudio
中国地区用户

微信公众号



微信号iCON-PRO

官方售后QQ



4006311312.114.qq.com

Twitter



www.twitter.com/iconproaudio

Instagram



www.instagram.com/iconproaudio

Facebook



www.facebook.com/iconproaudio

Youtube



www.youtube.com/iconproaudio

Website



www.iconproaudio.com

Support



support.iconproaudio.com

Dashboard



iconproaudio.com/dashboard/

www.iconproaudio.com