



# **i**KEYBOARD NANO

25/37/49/61/88-note velocity-sensitive piano-style keys USB  
MIDI controller keyboard

iKeyboard 3Nano



iKeyboard 4Nano



iKeyboard 5Nano







iKeyboard 6Nano



iKeyboard 8Nano



	<p><b>CAUTION</b></p> <p>RISK OF ELECTRIC SHOCK DO NOT OPEN RISQUE DE CHOC ELECTRIQUE NE PAS OUVRI</p> <p>CAUTION: TO REDUCE THE RISK OF ELECTRIC SHOCK DO NOT REMOVE COVER (OR BACK) NO USER-SERVICEABLE PARTS INSIDE REFER SERVICING TO QUALIFIED PERSONNEL</p> <p>ATTENTION: POUR EVITER LES RISQUES DE CHOC ELECTRIQUE: NE PAS ENLEVER LE COUVERCLE. AUCUN ENTRETIEN DE PIECES INTERIEURES PAR L'USAGER. CONFIER L'ENTRETIEN AU PERSONNEL QUALIFIE.</p> <p>AVIS: POUR EVITER LES RISQUES D'INCENDIE OU D'ELECTROCUTION, N'EXPOSEZ PAS CET ARTICLE A LA PLUIE OU A L'HUMIDITE</p>		
			

The lightning flash with arrowhead symbol within an equilateral triangle is intended to alert the user to the presence of uninsulated dangerous voltage within the product's enclosure, that may be of sufficient magnitude to electric shock to persons. Le symbol clair avec point de flèche à l'intérieur d'un triangle équilatéral est utilisé pour avertir l'utilisateur de la présence à l'intérieur du coffret de voltage dangereux non isolé d'ampleur suffisante.

The exclamation point within an equilateral triangle is intended to alert the user of the presence of important operating and maintenance (servicing) instructions in the literature accompanying the appliance. Le point d'exclamation à l'intérieur d'un triangle équilatéral est employé pour avertir les utilisateurs de la présence d'instructions importantes pour le fonctionnement et l'entretien (service) dans le livret d'instruction accompagnant l'appareil.

### ***Important Safety Instructions***

1. Read this manual thoroughly before using this unit.
2. Keep this manual for future reference.
3. Take notice of and comply with all warnings included in the user's manual or indicated on the appliance.
4. Follow all instructions included in this manual.
5. Do not expose this unit to rain or moisture. Avoid having water or other liquids spilled on this unit.
6. When cleaning the cabinet or other parts of this appliance, use only a dry or slightly damp soft cloth.
7. Do not block any ventilation openings or interfere with the proper ventilation of this unit. Install in accordance with the manufacturer's instructions.
8. Do not use or store near any heat sources such as radiators, heat registers, stoves, or other heat-producing appliances.
9. Do not interfere with the safety purpose of the polarized or grounding-type plug. A polarized plug has two blades with one wider than the other. A grounding-type plug has two blades and a third grounding prong. These are designated for your safety. If the provided plug does not fit into your outlet, consult an electrician.
10. Protect the power cord from being walked on or otherwise damaged by items placed on or against them. Particular attention should be given to the plugs, receptacles, and the point where the cord exits the appliance.
11. To avoid the risk of electrical shock, do not touch any exposed wiring while the unit is in operation.
12. Only use attachments/accessories specified by the manufacturer.
13. Unplug this unit and all connected electrical equipment during lightning storms or when left unused a long period of time.
14. Refer all servicing to qualified service personnel. Servicing is required when the appliance has been damaged in any way or fails to operate normally.

**WARNING: To reduce the risk of fire or electric shock, do not expose this unit to rain or moisture**

# Contents

Introduction.....	4
What's in the package? .....	4
Register your ICON ProAudio product to your personal account .....	5
Features .....	6
Front Panel Layout .....	7
Rear panel layout .....	8
Getting Started .....	9
Connecting your ikeyboard Nano controller .....	9
Download the Windows driver from your "Personal User Page at <a href="http://www.iconproaudio.com">www.iconproaudio.com</a> " .....	10
Installing iMap™ Software for Windows .....	11
Assigning MIDI functions with iMap™ .....	13
iMap™ ikeyboard Nano software panel .....	13
Firmware upgrade .....	16
Restore the factory default settings.....	19
Reverse sustain pedal connector polarity.....	19
Velocity curve .....	20
Specifications .....	21
Services.....	22

# Introduction

Thank you for purchasing the ICON iKeyboard 3Nano / 4 Nano /5Nano / 6Nano / 8Nano USB MIDI controller. We sincerely trust this product will provide years of satisfactory service, but if anything is not to your complete satisfaction, we will endeavor to make things right.

In these pages, you'll find a detailed description of the features of the iKeyboard 3Nano / 4 Nano /5Nano / 6Nano / 8Nano, as well as a guided tour through its front and rear panels, step-by-step instructions for their setup and use, and full specifications.

Please register the product on our website at the below link  
**[www. iconproaudio.com/registration](http://www.iconproaudio.com/registration)**:

Please follow the step by step procedures. Start by inputting the device's serial number as well as your personal information, etc. By registering your product online, you will be entitled to service and after-sales support at our Help Center by visiting our website at **[www.iconproaudio.com](http://www.iconproaudio.com)**. Also, all the registered products under your account will be listed on your personal product page where you will find updated information such as firmware/driver upgrades, software bundles, user manual downloads, etc. for your device.

As with most electronic devices, we strongly recommend you retain the original packaging. In the unlikely event the product must be returned for servicing, the original packaging (or reasonable equivalent) is required.

With proper care and adequate air circulation, your iKeyboard 3Nano / 4 Nano /5Nano / 6Nano / 8Nano will operate without any trouble for many years. We recommend that you record your serial number in the space provided below for future reference.

## What's in the package?

- iKeyboard 3Nano / iKeyboard 4Nano / iKeyboard 5Nano / iKeyboard 6Nano / iKeyboard 8Nano - 25/37/49/61/88-note velocity-sensitive piano-style keys USB MIDI controller keyboard x 1
- Quick Start Guide x 1
- USB 2.0 cable x 1

# **Register your ICON ProAudio product to your personal account**

## **1. Check serial number of your device**

Please go to [http:// iconproaudio.com/registration](http://iconproaudio.com/registration) or scan the QR code below.



Input your device's serial number and the other information on the screen. Click "Submit".

A message will pop up showing your device information such as model name and its serial number - Click "Register this device to my account" or if you see any other message, please contact our after-sales service team

## **2. Log in to your personal account page for existing user or sign up for new user**

Existing user: Please log into your personal user page by inputing your user name and password.

New user: Please click "Sign Up" and fill in all the information.

## **3. Download all useful materials**

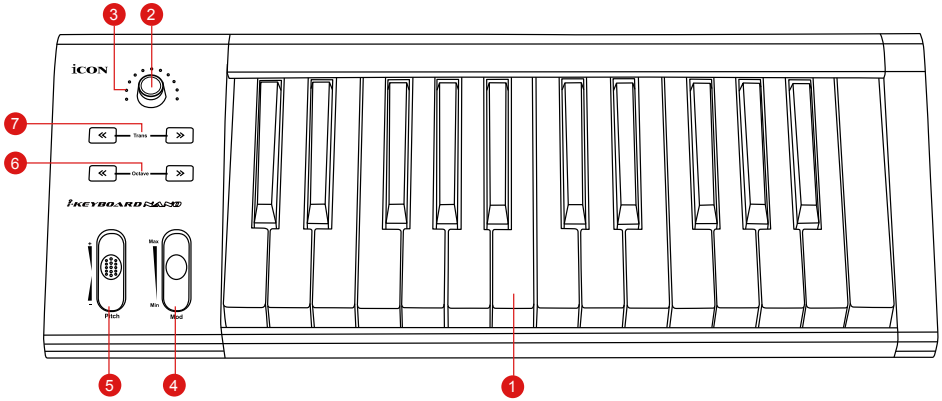
All your registered devices under your account will show on the page. Each product will be listed along with all its available files such as drivers, firmware, user manual in different languages and bundled software etc. for download. Please make sure you have download the necessary files such as driver before you begin device installation.

# Features



- Dual function encoder knob (Enter & rotate)
- 11-segment LED surrounding the encoder to indicate the rotating position (Volume & Pan).
- Velocity-sensitive piano style keyboard
- Modulation and Pitch jog-wheel
- Octave up/down buttons
- Transpose up/down buttons
- Multi velocity curves available for selection (Key and Pads)
- Midi output jack
- Expression & sustain pedal TRS connectors
- Sustain pedal connector polarity reversible
- Class-compliant with Windows XP, Vista (32-bit/64-bit), Windows 7/8/10 (32-bit & 64-bit), and Mac OS X (IntelMac)
- USB 2.0 high speed connectivity
- Firmware upgrade available simply via USB connection and iMap software.
- Robust metal casing with Kensington lock port

# Front Panel Layout



## 1. 25/37/49/61/88-note key switches

25/37/49/61/88-note velocity-sensitive piano-action key switches.

## 2. Dual function encoders

The dual functioned encoder acting as a push-button and a rotary control. When an encoder is pressed, it may be used to change modes of operation or to change what appears in the display above the channel strips. When an encoder is rotated, depending on its assigned function, it can be used to adjust a channel's pan, send level, or plug-in parameters.

## 3. Encoder LED

The 11-LED surrounding the encoder lights up to indicate the relative position of the rotation without having to look at your computer.

## 4. Modulation jog wheel

Rotate to adjust the modulation effect.

## 5. Pitch jog wheel

Rotate to adjust the pitch bend. It returns to default, "0" when released.

## 6. Octave buttons

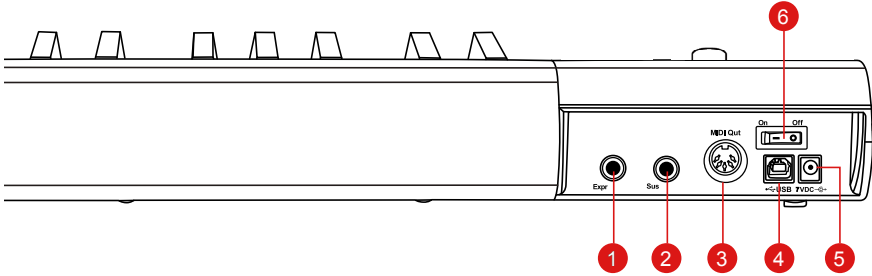
Raise or lower the pitches played on your keyboard.

## 7. Transpose button (Use in conjunction with the Octave up/down buttons)

Raise or lower the pitches (by less than an octave) played on your keyboard.

*(Tip: While pressing and holding the "Transpose" button, press a keyswitch within an octave range from the original c1 position) to change the c1 to that particular switch.)*

# Rear panel layout



## 1. Expression Pedal Input

A standard expression pedal can be connected via this 1/4" input.

## 2. Sustain Pedal Input

This 1/4" jack can be used to connect a momentary footswitch, like a piano's sustain pedal. (ICON SPD-01)

*Tip:* You may reverse the sustain pedal connector polarity with the provided iMap.

## 3. MIDI Out Port

Use the MIDI Out terminal to connect an external synthesizer or sound module.

## 4. USB port

Functions as a MIDI port to your notebook (or computer) and compatible software. Also provides power to your iKeyboard 3Nano/4Nano/5Nano/6Nano/8Nano.

## 5. 7V/1A DC power adapter connector

Connect your 7V/1A DC power adapter (optional) here.

## 6. Power switch

Power switch for your iKeyboard 3Nano/4Nano/5Nano/6Nano/8Nano.



# Getting Started

## Connecting your ikeyboard Nano controller

### 1. Connect the ikeyboard Nano to your Mac/PC via the USB port.

Choose a USB port on your Mac/PC and insert the wide (flat) end of the USB cable. Connect the cable's small jack end to the ikeyboard Nano. Your Mac/PC should automatically "see" the new hardware and notify you that it is ready to use.


### 2. Setup your DAW

Activate the ICON ikeyboard Nano controller in your DAW or MIDI software using "MIDI Setup" or "MIDI Devices".

# Download the Windows driver from your “Personal User Page at [www.iconproaudio.com](http://www.iconproaudio.com)”

After you downloaded the driver file, please click it to start the installation process.

CONTROL SURFACES	KEYBOARDS	INTERFACES	HEADPHONES	MICROPHONES	STUDIO MONITORS	PROCESSORS
------------------	-----------	------------	------------	-------------	-----------------	------------

iKeyboard 3Nano  
Serial Number: C3P9IF1

Unregister this device

---

iMap for MacOS [Download the latest](#)

iMap for Windows [Download The Latest](#)

Quick Start Guide [Download](#)

Diagram 1

## 1. iMap™ Software for Mac OS X

Please follow the procedures below step-by-step to launch your iMap™ software in Mac OS X.

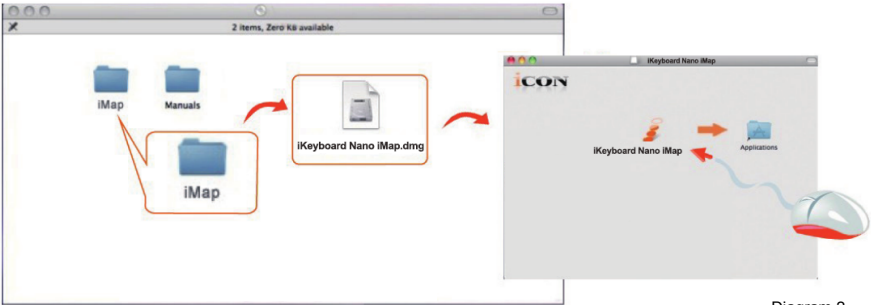


Diagram 2

**Tips:** By “dragging and dropping” the “ikeyboard Nano” icon into the “Applications” folder, you can create a “iMap” shortcut on your Mac’s desktop.

# Installing iMap™ Software for Windows

Please follow the procedures below step-by-step to install your iMap™ software.

## ① Turn on your PC

## ② Download the Windows driver from your “Personal User Page at [www.iconproaudio.com](http://www.iconproaudio.com)”

After you downloaded the driver file, please click it to start the installation process.

## ③ Setup Wizard appear

Setup wizard appears, please click “Next”.

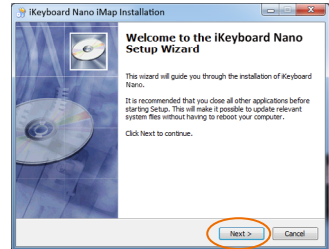


Diagram 3

## ④ Choose Install Location

Choose your preferred install location for iMap™ or use the default location and click “Next”.

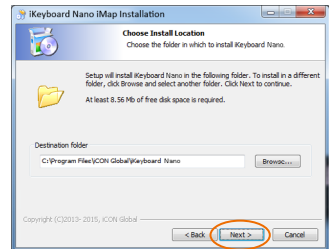


Diagram 4

## ⑤ Select shortcut

Select the start menu folder in which you would like to create the iMap™ shortcut. Then click “Next”.

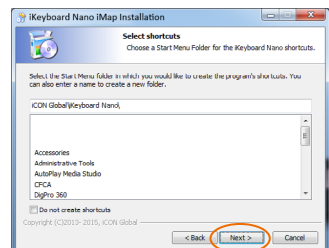


Diagram 5

**⑥ Create a shortcut on your desktop**

Please untick the box if you do not want to place a shortcut icon on your desktop for iMap™, otherwise click “Next”.

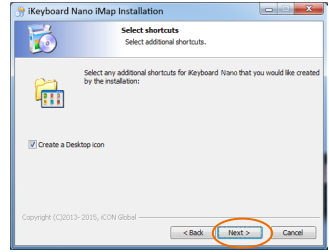


Diagram 6

**⑦ iMap™ started to install**

The iMap™ installation has now started, wait for it to finish. Then click “Finish”.

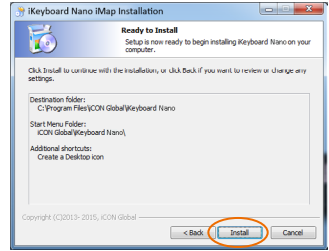


Diagram 7

**⑧ Installation finished**

Click “Finish” to complete the iMap™ software installation.



Diagram 8

# Assigning MIDI functions with iMap™

You can use iMap™ to easily assign the MIDI functions of your ikeyboard Nano.

**Note:** If your ikeyboard Nano is not connected to your Mac/PC, the message “There are no MIDI input devices” will appear. Please connect ikeyboard Nano to your Mac/PC with the provided USB cable.

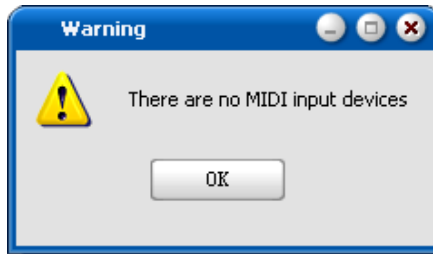
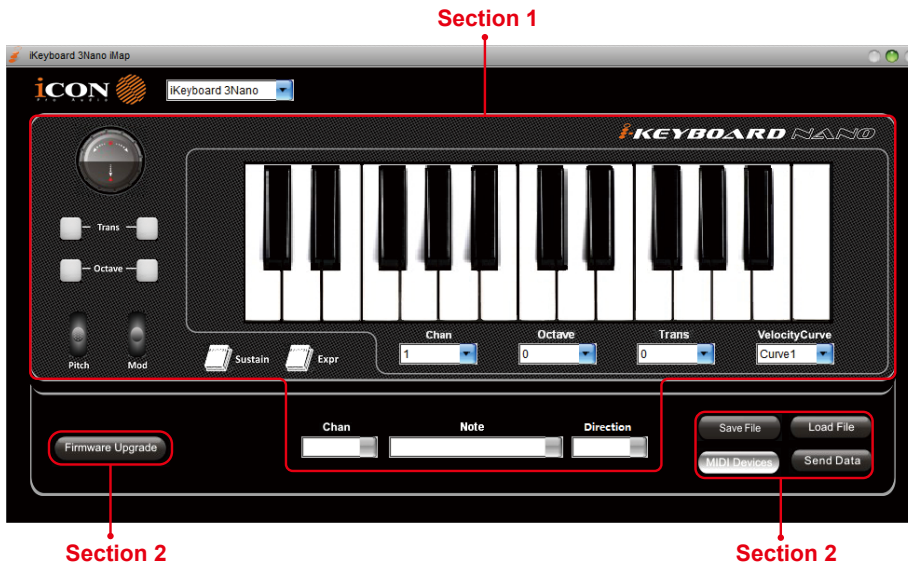


Diagram 9

## iMap™ ikeyboard Nano software panel

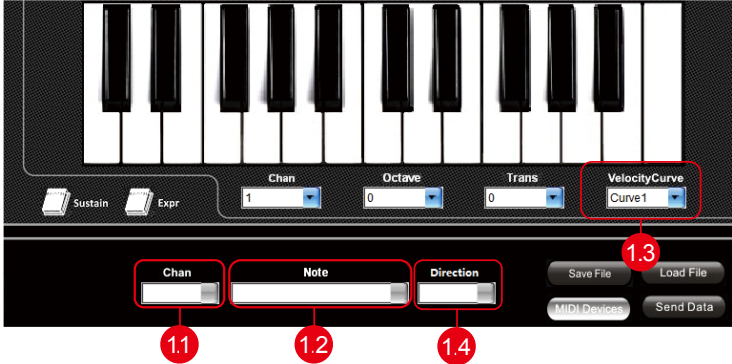
ikeyboard Nano's iMap is divided into two main sections as described below:



# Section 1

## 1.0 Keyboard elements assignment

These elements include the key switches, velocity curve, modulation/pitch bend jog wheel, Sustain & Expression pedal, Transpose & Octave buttons. These elements are assigned by the top three drop down windows. To assign a control, select it by clicking it and assign a different midi message by the two drop down menus (MIDI Channel & CC).



### 1.1 MIDI Channel

Assign MIDI channel from 0-16.

### 1.2 CC value

Assign MIDI CC value from 0-127.

### 1.3 Velocity Curve

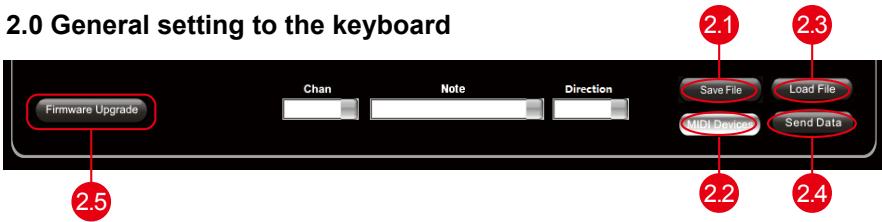
Select the available velocity curve of your keyboard. For the difference velocity curve diagram, please refer to P.19.

### 1.4 Sustain Pedal

You could reverse the sustain pedal connector polarity. Please refer to P.18 for details.

## Section 2

### 2.0 General setting to the keyboard



#### 2.1 “Save file” button

Click this button to save your current settings for the ikeyboard Nano. The file is an “ikeyboard Nano” file.

#### 2.2 “Load file” button

Click this button to load a previously saved “. ikeyboard Nano” setting file for your ikeyboard Nano.

#### 2.3 “Send Data” button

Click this button to upload the iMap™ software settings to your ikeyboard Nano via USB connection.

*(Note: You must have connected your ikeyboard Nano to your Mac/PC, otherwise the settings upload will not be successful.)*

#### 2.4 “MIDI Devices” button

Click this button, a MIDI device select window will appear as shown in diagram 10. Please select “ICON ikeyboard Nano” for the MIDI Out Devices.



Diagram 10

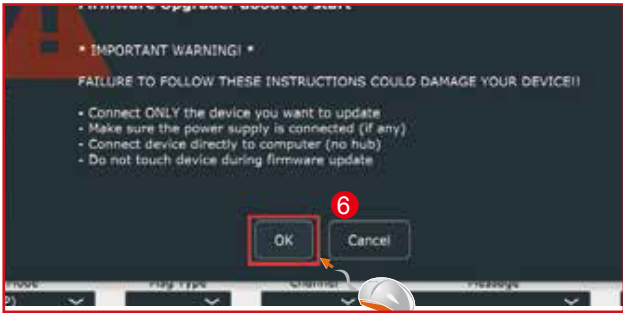
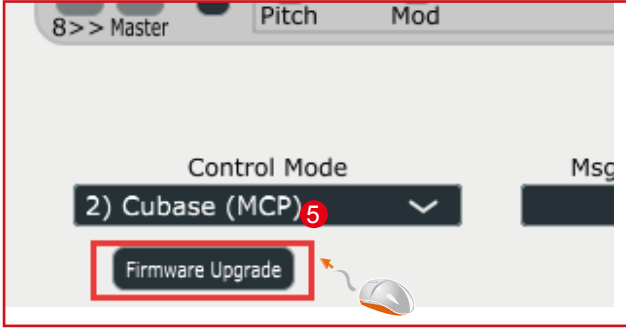
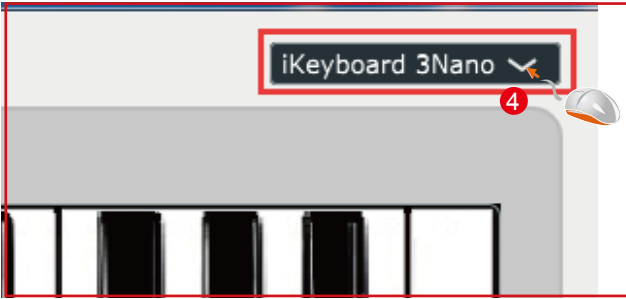
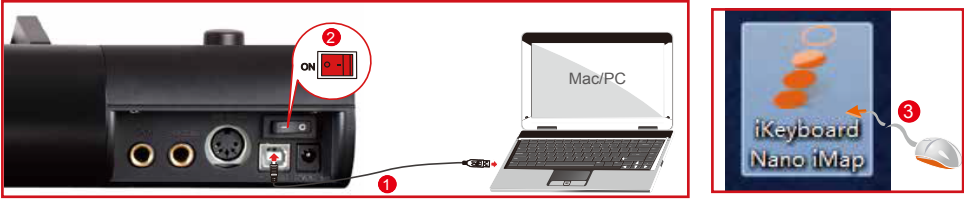
*(Note: Please make sure you have pressed this button every time you launched iMap, select your ICON product on the MIDI input-output Device pop-up menu to make sure the communication between iMap and your ICON product is created successfully.)*

#### 2.5 “Firmware Upgrade” button

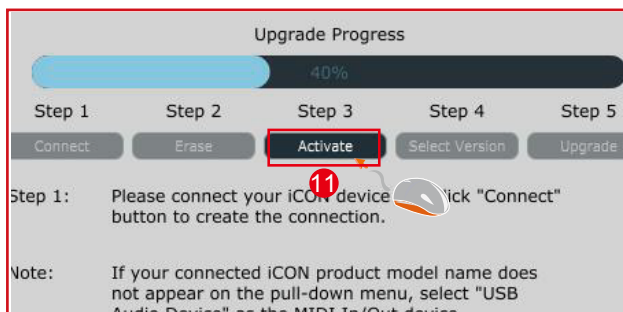
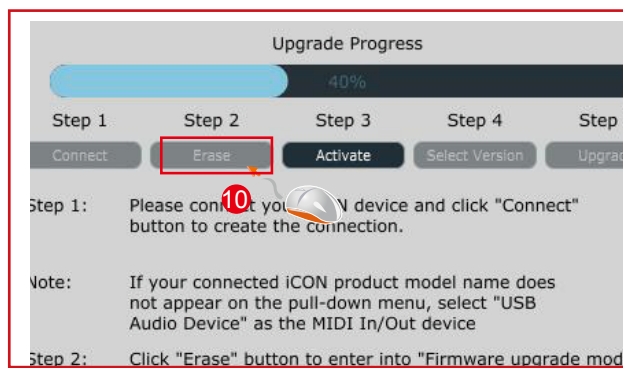
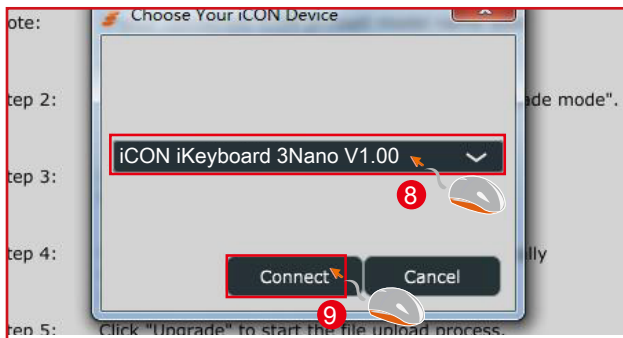
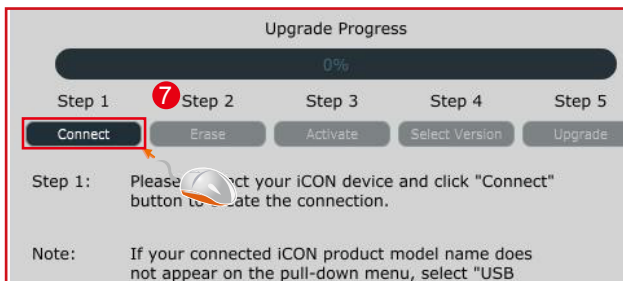
Click this button to enter into the firmware upgrade window for ikeyboard Nano. Please refer to P.15 for the firmware upgrade procedure.

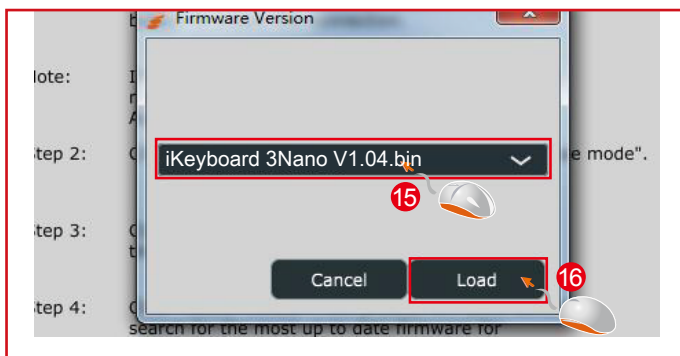
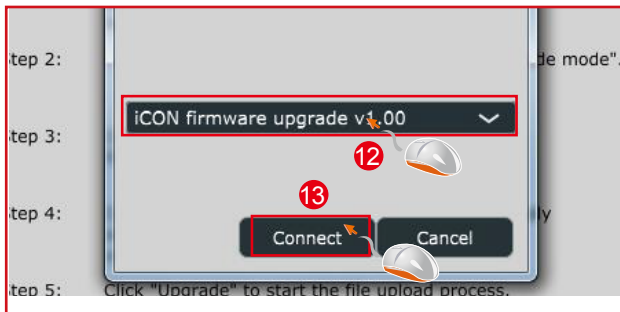
# Firmware upgrade

ikeyboard Nano functional firmware upload procedure









## ***Restore the factory default settings***

To restore your ikeyboard Nano settings to factory default, simply import the “Factory Default” setting file into your ikeyboard Nano with the original setting of the iMap software.

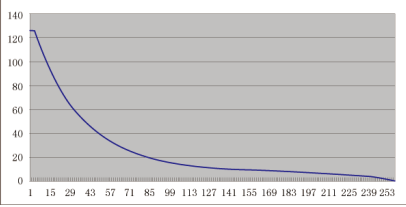
## ***Reverse sustain pedal connector polarity***

There are two major type of sustain pedal on the market, they are having a reverse polarity and thus will have the exact opposite reaction. You may adjust the polarity of your ikeyboard Nano sustain pedal connector with the provided iMap (V1.03 or above). Please follow the below instructions to adjust the polarity.

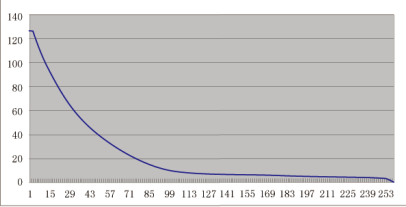
- 1.Launch iMap again and click “MIDI Devices” button to select ikeyboard Nano or USB Audio Device form the pop-up menu
- 2.Click the ‘Sustain Pedal” logo and select “reverse” on the left-side pull down menu.
- 3.Click “Send Data” button to upload the settings to your ikeyboard Nano.
- 4.Close iMap software.

# Velocity curve

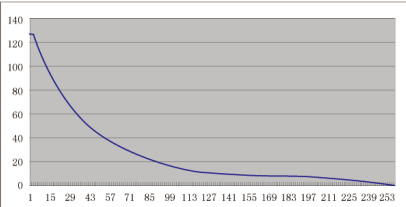
**Curve 1**



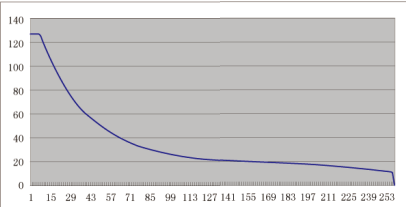
**Curve 2**



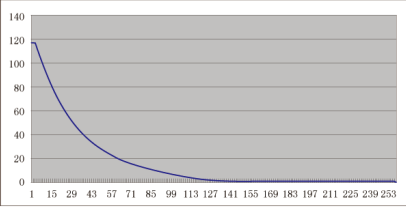
**Curve 3**



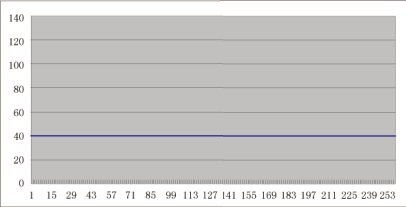
**Curve 4**



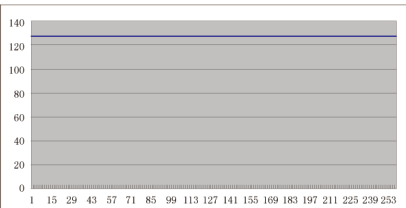
**Curve 5**



**Curve 6**



**Curve 7**



# Specifications

## Connector:

USB	USB connector (standard type)
Sustain & Expression	2x1/4" TS connectors
MIDI I/O	5-pin Din connector

Power supply	7V/1A DC
Current consumption	100mA or less

## Weight:

iKeyboard 3Nano	2.17kg	4.78(lb)
iKeyboard 4Nano	3.03kg	6.68(lb)
iKeyboard 5Nano	3.87kg	8.53(lb)
iKeyboard 6Nano	4.7kg	10.36(lb)
iKeyboard 8Nano	6.56kg	14.46(lb)

## Dimensions:

iKeyboard 3Nano	476(L)x189(W)x72(H)mm
	18.7"(L)x7.44"(W)x2.83"(H)
iKeyboard 4Nano	641(L)x189(W)x72(H)mm
	25.4"(L)x7.44"(W)x2.83"(H)
iKeyboard 5Nano	806(L)x189(W)x72(H)mm
	31.7"(L)x7.44"(W)x2.83"(H)
iKeyboard 6Nano	971(L)x189(W)x72(H)mm
	38.2"(L)x7.44"(W)x2.83"(H)
iKeyboard 8Nano	1349(L)x189(W)x72(H)mm
	53.11"(L)x7.44"(W)x2.83"(H)

# Services

If your ikeyboard Nano needs servicing, follow these instructions.

Check our online Help Center at <http://support.iconproaudio.com/hc/en-us>, for information, knowledge, and downloads such as:

1. FAQ
2. Download
3. Learn More
4. Forum

Very often you will find solutions on these pages. If you don't find a solution, create a support ticket at our online Help Center at the link below, and our technical support team will assist you as soon as we can.

Navigate to <http://support.iconproaudio.com/hc/en-us> and then sign in to submit a ticket.

As soon as you have submitted an inquiry ticket, our support team will assist you to resolve the problem with your ICON ProAudio device as soon as possible.

To send defective products for service:

1. Ensure the problem is not related to operation error or external system devices.
2. Keep this owner's manual. We don't need it to repair the unit.
3. Pack the unit in its original packaging including end card and box. This is very important. If you have lost the packaging, please make sure you have packed the unit properly. ICON is not responsible for any damage that occurs due to non-factory packing.
4. Ship to the ICON tech support center or the local return authorization. See our service centers and distributor service points at the link below:

If you are located in US

Send the product to:

**North America**

**Mixware, LLC – U.S. Distributor**  
**11070 Fleetwood Street – Unit F.**  
**Sun Valley, CA 91352; USA**  
**Tel.: (818) 578 4030**

**Contact: [www.mixware.net/help](http://www.mixware.net/help)**

If you are located in Europe

Send the product to:

**Sound Service**  
**GmbH European**  
**Headquarter Moriz-Seeler-Straße**  
**3D-12489 Berlin**  
**Telephone: +49 (0)30 707 130-0**  
**Fax: +49 (0)30 707 130-189**  
**E-Mail: [info@sound-service.eu](mailto:info@sound-service.eu)**

If you are located in Hong Kong

Send the product to:

**ASIA OFFICE:**

**Unit F, 15/F., Fu Cheung Centre,**  
**No. 5-7 Wong Chuk Yueng Street,**  
**Fotan,**  
**Sha Tin, N.T., Hong Kong.**  
**Tel: (852) 2398 2286**  
**Fax: (852) 2789 3947**  
**Email: [info.asia@icon-global.com](mailto:info.asia@icon-global.com)**

5. For additional update information please visit our website at:

**[www.iconproaudio.com](http://www.iconproaudio.com)**



天猫官方旗舰店



天猫店iconproaudio旗舰店

抖音号



抖音iCON艾肯

哔哩哔哩



B站iCONProAudio

微信公众号



微信号iCON-PRO

官方售后00



4006311312.114.qq.com

中国地区用户

Twitter



[www.twitter.com/iconproaudio](http://www.twitter.com/iconproaudio)

Instagram



[www.instagram.com/iconproaudio](http://www.instagram.com/iconproaudio)

Facebook



[www.facebook.com/iconproaudio](http://www.facebook.com/iconproaudio)

Youtube



[www.youtube.com/iconproaudio](http://www.youtube.com/iconproaudio)

Website



[www.iconproaudio.com](http://www.iconproaudio.com)

Support



[support.iconproaudio.com](http://support.iconproaudio.com)

Dashboard



[iconproaudio.com/dashboard/](http://iconproaudio.com/dashboard/)

[www.iconproaudio.com](http://www.iconproaudio.com)